

GENERAL SAFETY WARNINGS

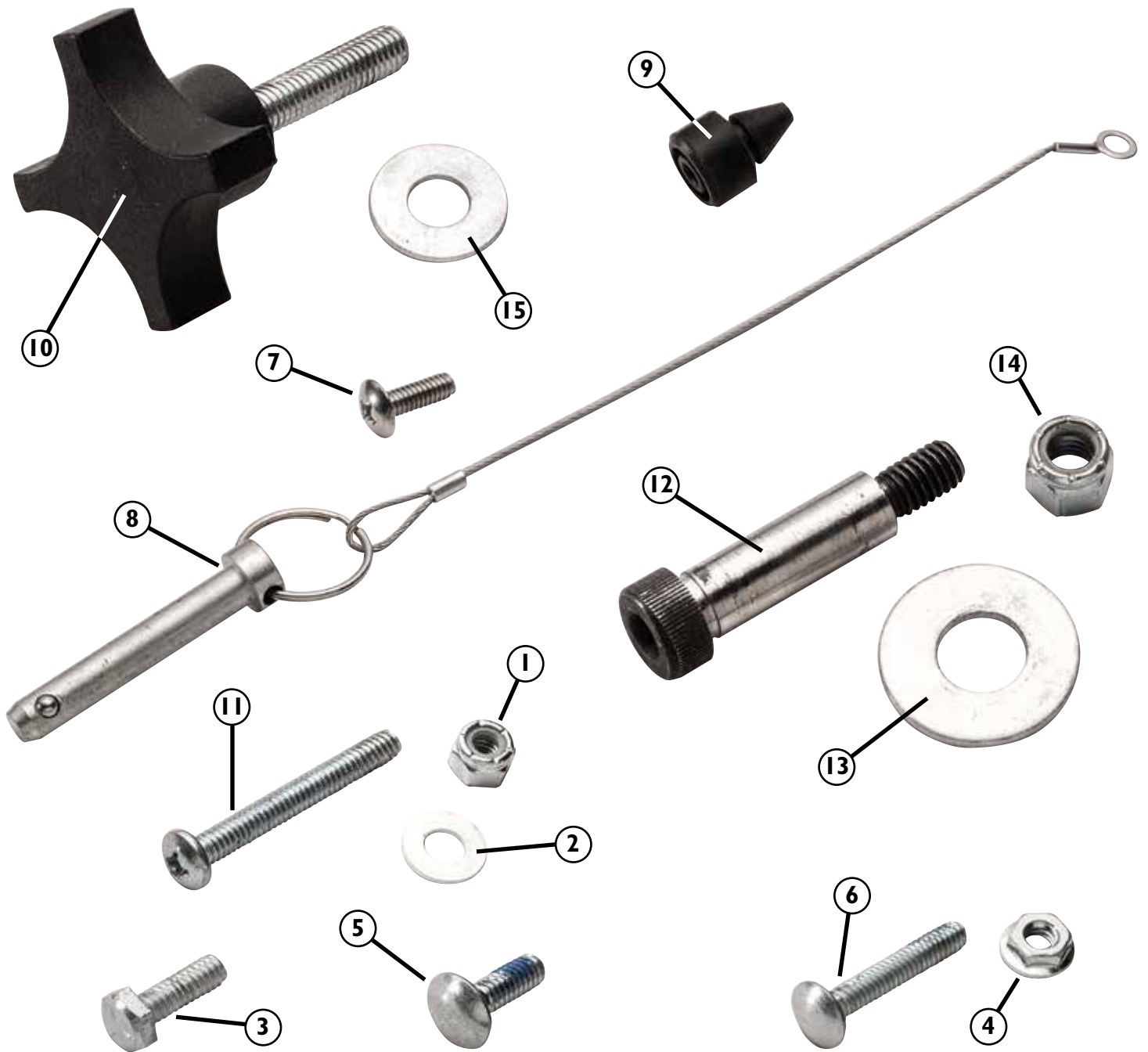
This tool is designed for specific applications as defined in the instructions and should not be modified and/or used for any other applications. Before using the Material Mate™, read, understand and follow all instructions and safety information provided. **KEEP THESE INSTRUCTIONS FOR FUTURE REFERENCE.**

- > For any tool used in conjunction with this product, always read, understand and follow the instructions and safety warnings for that tool.
- > Before using this product, review and verify that all tools to be used with it have safety equipment installed and are in proper working order as defined by the tools' owner's manuals.
- > Do not use this product until you have read and are confident you understand the:
 - Product Specific Safety Warnings (below);
 - Material Mate™ Assembly (pp. 4-6);
 - Material Mate™ Loading (p. 6);
 - Lifting the Sheet Upright (p. 7);
 - Transporting the Sheet (p.7);
 - Unloading the Material (pp. 7-8);
 - Positioning the Material at the Table Saw (p. 8);
 - Using as a Work Table (p. 8).
- > Remain alert and use good judgment when using this tool. Do not use this tool if you are in any way impaired by medications, alcohol, drugs or fatigue.
- > Dress appropriately and remove all jewelry, secure loose clothing and tie up long hair before using this tool.
- > It is the sole responsibility of the purchaser of this tool to ensure that any third party reads and complies with all the instructions and safety precautions outlined in this manual prior to using the tool.
- > Maintain these instructions and warnings as long as you own the tool. Keep this booklet in a place where it will be readily available for reference.
- > The user assumes all risk for the proper use of this tool and for ensuring product suitability for intended application.
- > Always wear safety glasses in compliance with ANSI safety standards and hearing protection and follow all standard shop safety practices, including:
 - Keep your work area well lit and clean;
 - Use dust collection tools and dust face masks to reduce exposure to dust;
 - Use accessory safety equipment such as featherboards, push sticks and push blocks whenever appropriate;
 - Do not use power tools in explosive environments (e.g., in the presence of flammable liquids, fumes or dust);
 - Keep children and bystanders away while operating your tools;
 - Maintain proper footing at all times and do not overreach;
 - Do not force the tool;
 - Unplug all power tools before making any adjustments or changing accessories.
- > These warnings and instructions do not represent the total of all information available regarding tool safety, use and technique. Always seek out opportunities to learn more and improve your skills and knowledge.

WARNING

PRODUCT SPECIFIC SAFETY WARNINGS

- > Load is not secured when in vertical position. Do not attempt to machine or otherwise work on the material in any way while it is upright on the cart.
- > Make sure Material Mate™ is assembled so that its height, when flat, is 1/2" below the surface of the table saw. This includes any top attached to the Material Mate™.
- > Table Extension (21) is not locked when in the upright position and could unexpectedly tip back to horizontal position if downward pressure is inadvertently applied.
- > Do not load sheet goods onto the Material Mate™ on slanted or uneven ground or the cart could move or tip. Only load on level ground.
- > Never feed sheet directly from the Material Mate™ into the table saw. Transfer sheet to table saw first, before turning on saw.
- > Make sure that there is proper outfeed support for the material as it leaves the table saw.



PARTS LIST		Quantity	Quantity
1	1/4" Lock Nut	18	9 Rubber Bumper
2	1/4" Washer	18	10 4-Star Knob
3	1/4" x 3/4" Hex Bolt	16	11 1/4" x 2" Bolt
4	1/4" Flange Nut	20	12 Shoulder Bolt
5	1/4" x 5/8" Bolt	8	13 1/2" Washer
6	1/4" x 1 1/2" Bolt	12	14 3/8" Lock Nut
7	1/4" x 1/2" Bolt	2	15 3/8" Washer
8	Safety Locking Pin	2	

PARTS LIST

	Quantity
16 Base	1
17 Locking Caster	2
18 Caster	2
19 Leg Support	4
20 Vertical Support	2
21 Crossbar	1
22 Frame Assembly	1
23 Table Extension	1
24 Left Flip Stop	1
25 Right Flip Stop	1
26 Latch Arm	1

Material Mate™ Assembly

1. Attach the two Casters (18) and two Locking Casters (17) to the Base (16) with 1/4" x 3/4" Hex Bolts (3), 1/4" Washers (2) and 1/4" Lock Nuts (1). **Fig. 1.** Make sure to install the casters in the orientation shown — the Locking Casters (17) must be installed on the same end of the base so they are side by side.
2. Attach the four Leg Supports (19) to the Base (16) with 1/4" x 5/8" Bolts (5) and 1/4" Flange Nuts (4). **Fig. 2.**
3. Slide the Vertical Supports (20) into the Leg Supports (19), aligning the bottom set of holes in the Vertical Supports with the holes in the Leg Supports, and secure with 1/4" x 1 1/2" Bolts (6) and 1/4" Flange Nuts (4). **Fig. 3.** You will need to adjust the height setting in a later step.
4. Position the Crossbar (21) between the Vertical Supports (20) and attach with 1/4" x 1 1/2" Bolts (6) and 1/4" Flange Nuts (4). **Fig. 3.**
5. Attach a Safety Locking Pin (8) to the outside face of each Vertical Support (20) with a 1/4" x 1/2" Bolt (7) threaded into the integral nut in the support. **Fig. 3.**

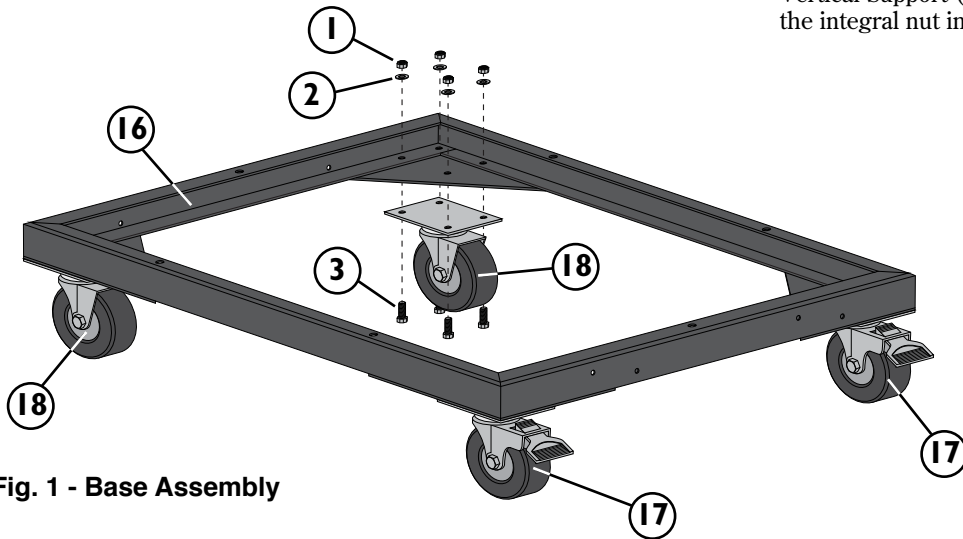


Fig. 1 - Base Assembly

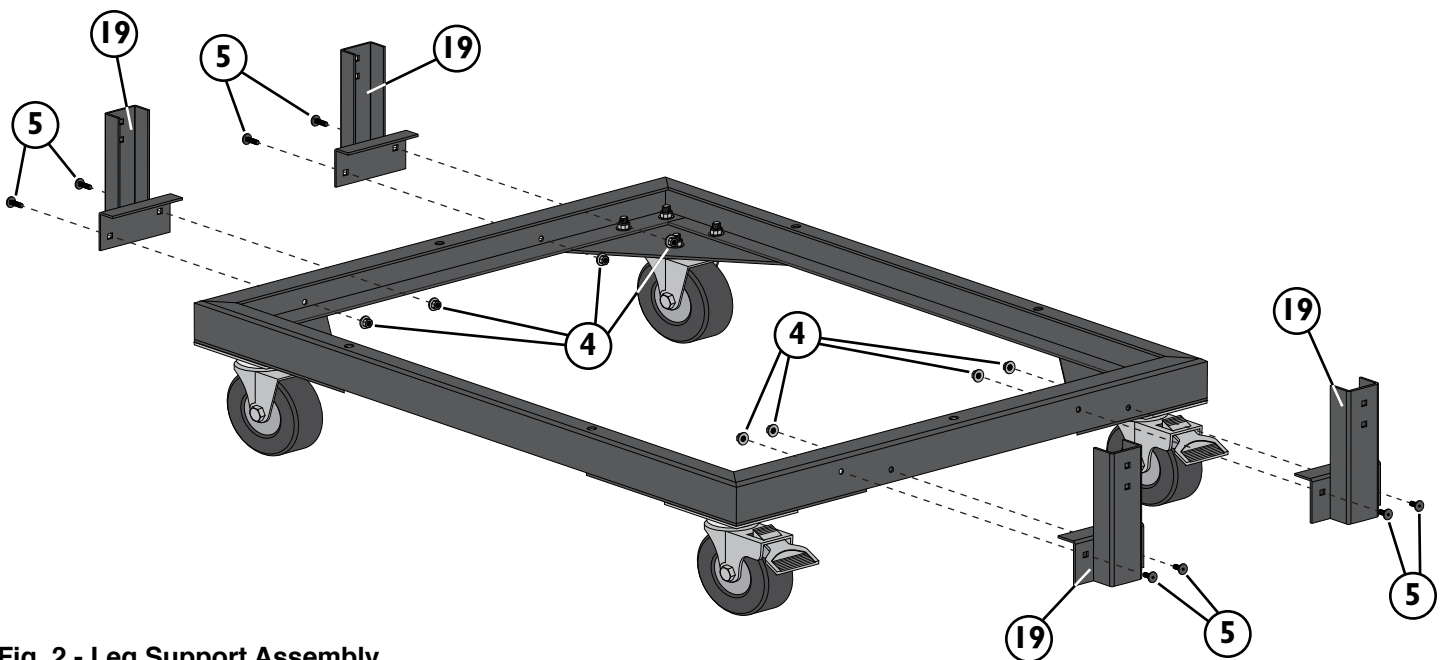


Fig. 2 - Leg Support Assembly

6. Press the Rubber Bumpers (9) into the appropriate holes on the angled faces of the Vertical Supports (20). **Fig. 3.**
7. Slide the Table Extension (23) into the Frame Assembly (22), depressing the bullet pins in the Table Extension (23) to allow it to fully insert. **Fig. 4.**
8. Attach the Left and Right Flip Stops (24 and 25) at the appropriate locations on the Table Extension (23) with 4-Star Knobs (10) and 3/8" Washers (15). The small tabs at the bottom of the Flip Stops should be oriented toward the outside edge of the assembly. **Fig. 4.**
9. Attach the Latch Arm (26) to the back of the Frame Assembly (22) with 1/4" x 2" Bolts (11), 1/4" Washers (2) and 1/4" Lock Nuts (1). **Fig. 4.**
10. Set the Frame Assembly (22) on the Vertical Supports (20), aligning the holes in the downward tabs of the frame with the holes at the top of the supports. Attach with Shoulder Bolts (12), 1/2" Washers (13; these go on the outside of the tabs) and 3/8" Lock Nuts (14). **Fig. 4.**

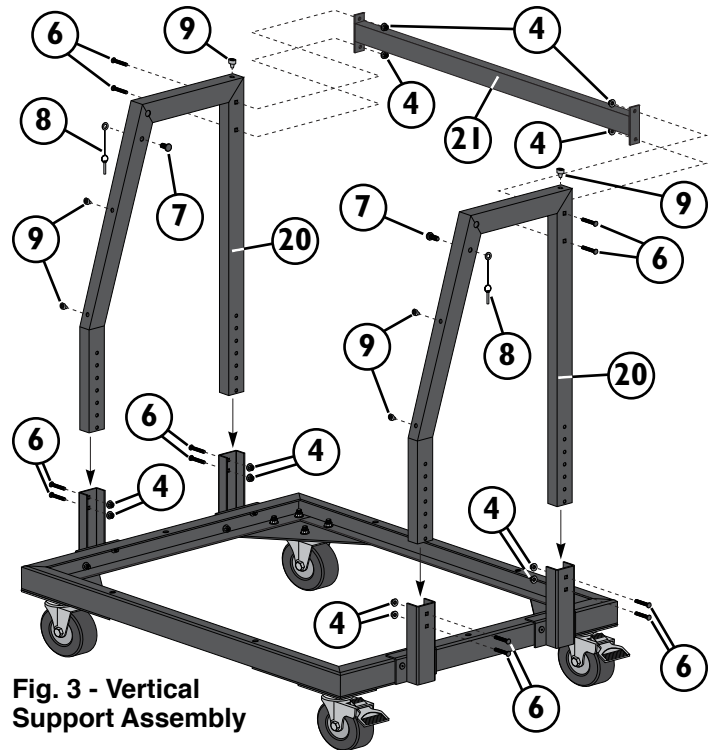


Fig. 3 - Vertical Support Assembly

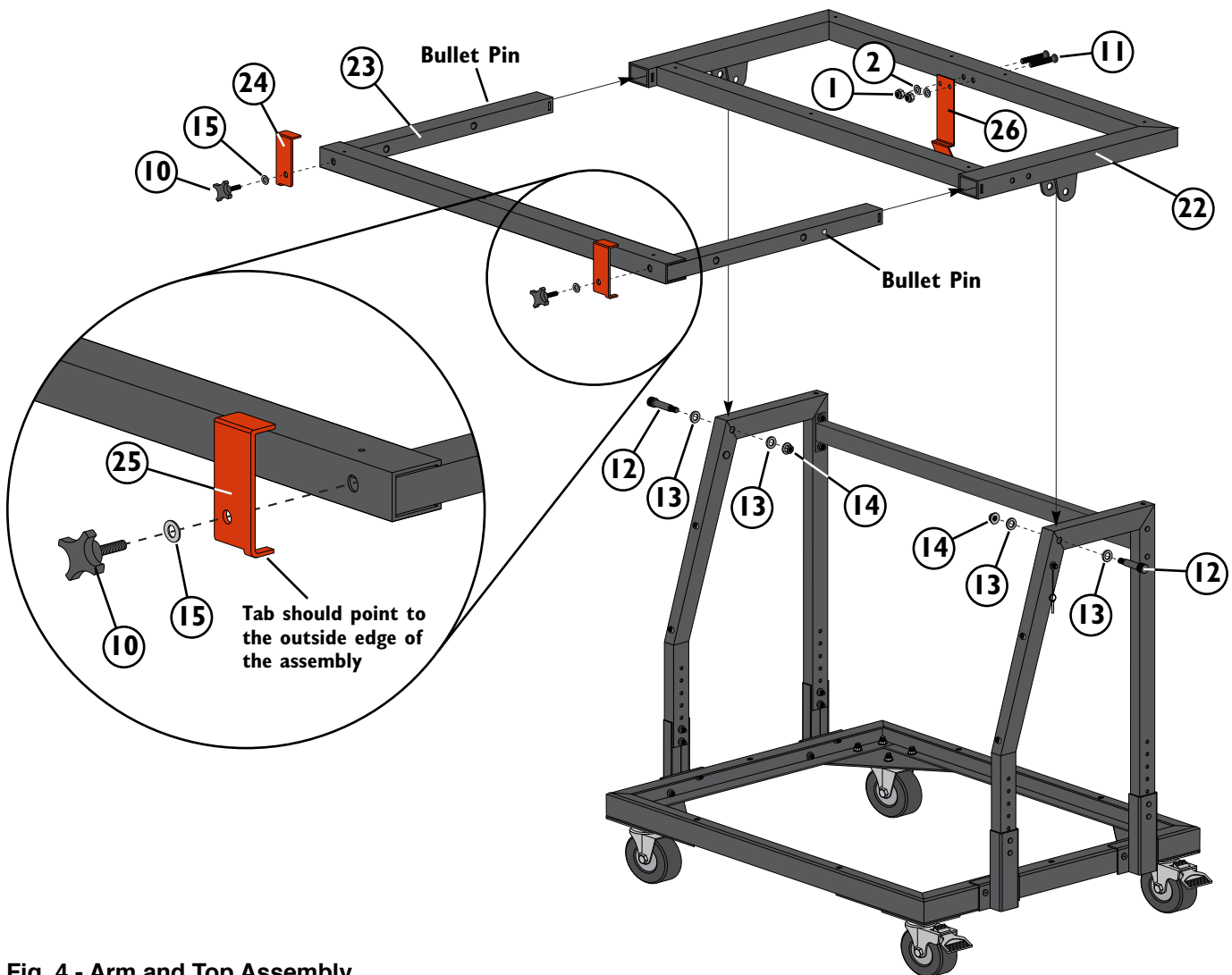


Fig. 4 - Arm and Top Assembly

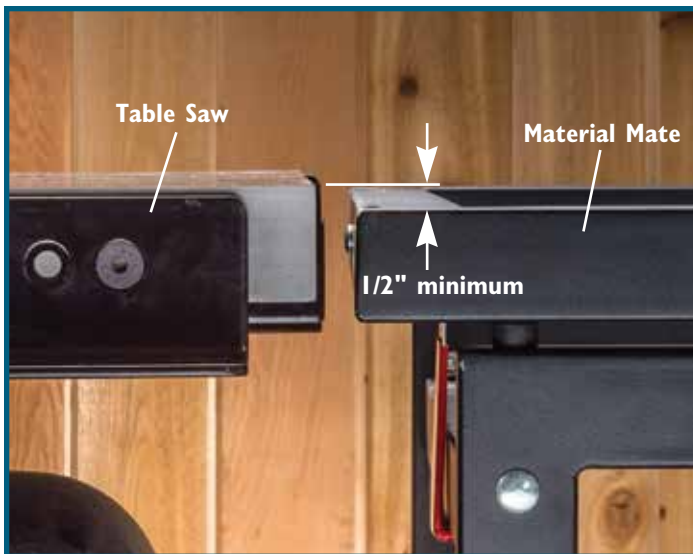


Fig. 5



Fig. 6



Fig. 7

- Adjust the height of the Material Mate™ cart by removing the 1/4" x 1 1/2" Bolts (6) and 1/4" Flange Nuts (4) holding the Vertical Supports (20) to the Leg Supports (19) and reattaching using the sets of holes that produce the proper height. The Material Mate™ must be assembled so that its height, when the Frame Assembly is flat, is at least 1/2" below the surface of the table saw. This includes any top attached to the Material Mate™. Fig. 5.

Material Mate Loading

⚠ WARNING

- > Overloading cart will cause tipping and potential injury. Do not load more than one sheet of 3/4" thick (max.) material at a time.

⚠ CAUTION

- > Do not attempt to lift more than you are physically able. Get help if necessary. Use proper lifting techniques.

- Position the Material Mate™ far enough from your vehicle so you will be able to center the sheet on the cart during unloading.
- Engage the Locking Casters (17) and rotate the Flip Stops (24 and 25) on the Table Extension (23) to the side so they are parallel to the Table Extension (23) and tighten the 4-Star Knobs (10). Fig. 6.
- Make sure the Latch Arm (26) is fully engaged to keep the top secure in a horizontal position and to prevent it from inadvertently tipping upright. Fig. 7.

⚠ CAUTION To avoid accidental Vertical tilting and unintended movement of the materials, Latch Arm (26) must be fully engaged ("clicked" to hold together the Frame Assembly (22) and Crossbar (21))

- Pull the Safety Locking Pins (8) from the Vertical Supports (20) and depress the bullet pins to pull the Table Extension (23) outward. Continue to pull the Table Extension (23) until the pins re-engage. The Locking Pins must be re-inserted to secure the Table Extension (23) in place. Fig. 8.
- Pull the sheet of material onto the Material Mate™ and center it on the cart.
- Adjust the position of the sheet material until the long edge nearest the Table Extension (23) is flush with the Table Extension (23).
- Rotate the Flip Stops (24 and 25) up and secure in place by tightening the 4-Star Knobs (10). Failure to secure the knobs could allow potentially dangerous shifting of the material during transport. Fig. 9.
- Make sure the sheet remains centered on the cart, both front to back and side to side. Off-center positioning could cause the load to become unstable or the cart to tip.

Lifting the Sheet Upright

1. Position yourself on the side of the sheet opposite the Flip Stops (24 and 25).
2. Holding the sheet securely, reach underneath and release the Latch Arm (26).

CAUTION Flip Stops (24 and 25) must be rotated up and secured by tightening the 4-Star Knobs (10) before the sheet can be safely tilted upright. Load will fall when tilted unless Flip Stops (24 and 25) are engaged. Fig. 9.

CAUTION Keep hands clear of the pivot point to avoid pinching fingers.

3. With sheet positioned against the Flip Stops (24 and 25) slowly allow the sheet to tip upright, maintaining a secure hold until the sheet stops moving and you're sure the load is stable on the cart. Fig. 10.

Transporting the Sheet

CAUTION

> Take special care and go slowly when moving across uneven surfaces such as a door threshold; material could shift or become unstable during transport.

1. Holding the material securely, release the Locking Casters (27).
2. With one hand on the material and one hand on the cart, carefully push the cart to its destination, paying close attention to the terrain in front of the cart. Fig. 11.

Unloading Material

1. Make sure the cart is on a flat, level surface. The cart could move or tip or the load could become unstable if unloaded on uneven terrain.

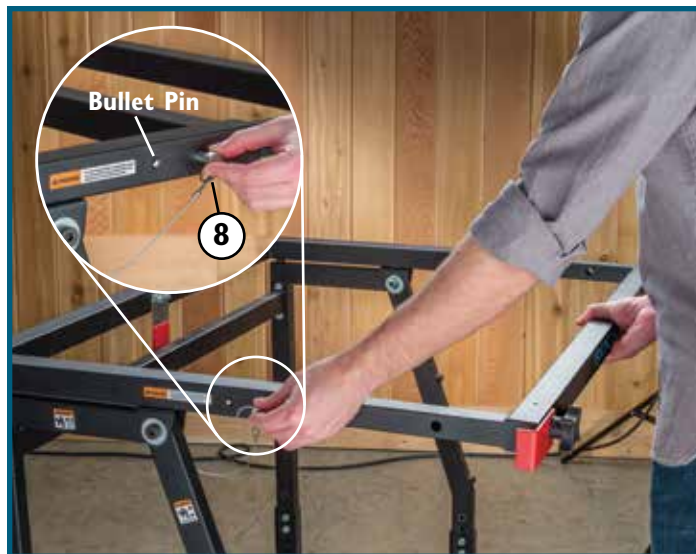


Fig. 8



Fig. 9



Fig. 10



Fig. 11

⚠WARNING Sliding sheets off the cart while in the upright position could cause the cart to tip, resulting in injury or property damage. Only unload when table frame is in a horizontal position.

2. Engage the Locking Casters (17).
3. Lift the sheet above the Flip Stops (24 and 26) and off the cart.

Positioning the Material at a Table Saw

⚠WARNING

> Never feed sheet directly from the Material Mate™ into the table saw. This can cause kickback and injury. Transfer sheet to table saw before turning on saw.

1. Position the cart so that, when sheet is tipped to the horizontal position, the leading edge of the sheet will be near but not on the saw's table. Engage the Locking Casters (17). **Fig. 12.**
2. With the saw turned off, verify that the cart is positioned correctly. Holding the sheet with both hands, carefully tip it and guide it to the horizontal position. Keep your hands clear of the cart to avoid pinching your fingers, and make sure the Latch Arm (26) engages against Crossbar (21) with a "click" to keep table in horizontal position.
3. If necessary, adjust the cart position by carefully tilting the sheet back upright, unlocking the casters and moving the cart. Repeat Steps 2-3 until optimal position is achieved. Engage the Locking Casters (17).
4. Holding the sheet with both hands, carefully slide it off the cart so one corner is on the edge of the table saw. **Fig. 13.**
5. Turn on the saw.
6. Make sure there is proper outfeed support for the material when it leaves the table saw.
7. Advance the material into the blade, keeping the edge tight against the fence. If necessary, use a push stick at the end of the cut to keep your hands away from the blade.



Fig. 13

Using as a Worktable

⚠CAUTION

> The Table Extension (23) must be retracted and secured if the Material Mate™ is to be used as a worktable. Use of the Material Mate™ as a table with the Table Extension (23) extended creates a tipping hazard. Make sure bullet pins and Safety Locking Pin (8) are fully engaged.

1. Attach a top and narrow extension strip to the Material Mate™ by driving screws (not included) through predrilled holes in the frame. **Fig. 14.**

⚠CAUTION Maximum thickness for a top is 3/4". If a top is attached, a narrower strip of equal thickness must be attached separately to the Table Extension (23). **Fig. 14.** This is necessary to maintain an even surface for stable handling of sheet goods.

Check Rockler.com for updates. If you have further questions, please contact our Technical Support Department at 1-800-260-9663 or support@rockler.com

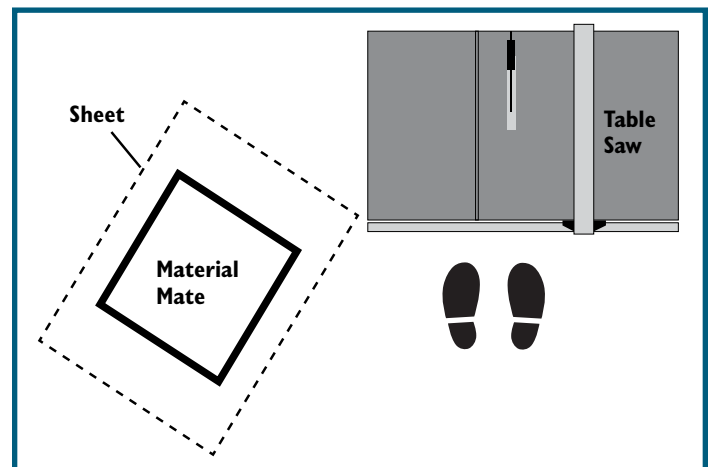


Fig. 12



Fig. 14